

# HRA Compensatory Sites Consultation

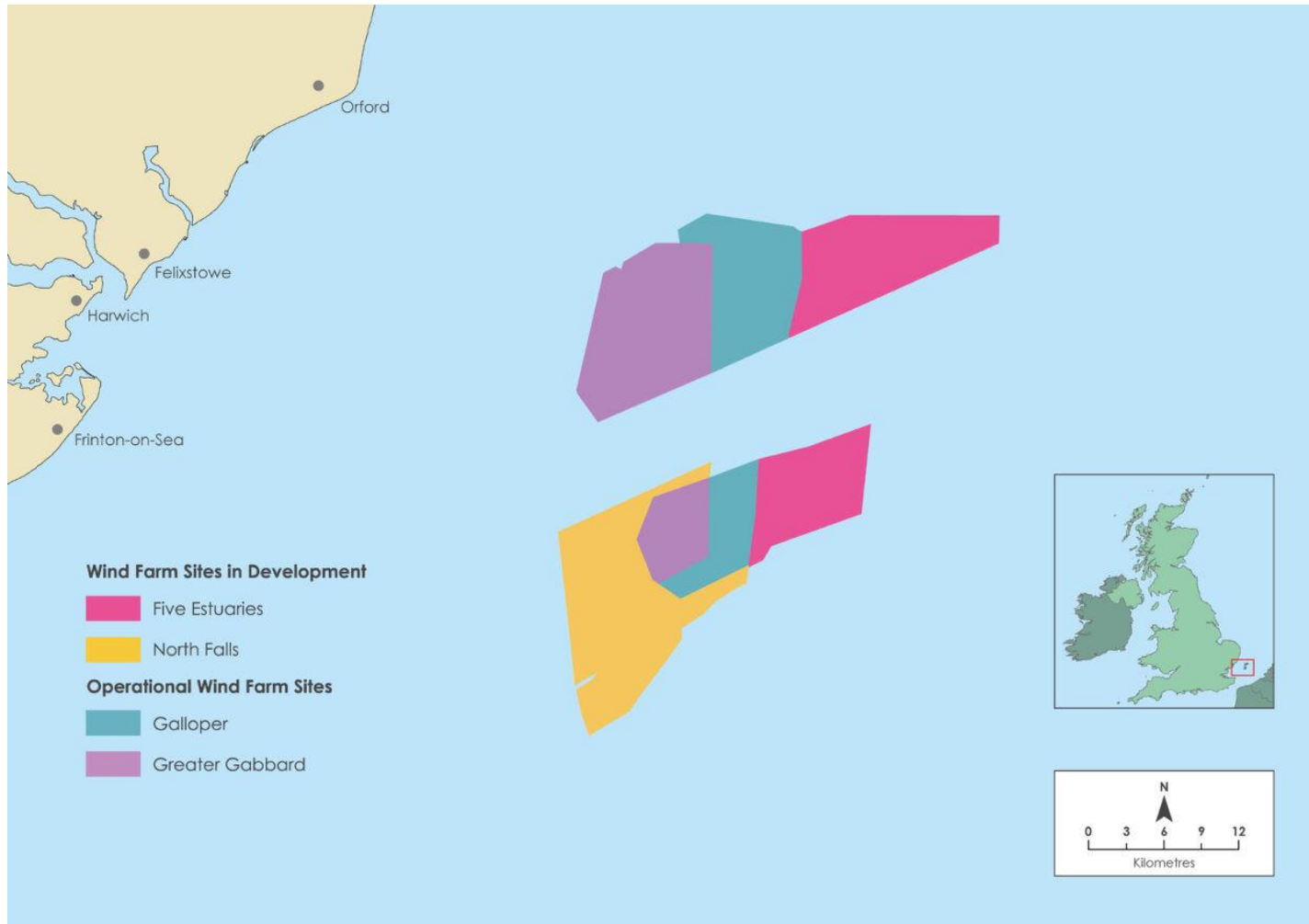
January 2024



# Agenda

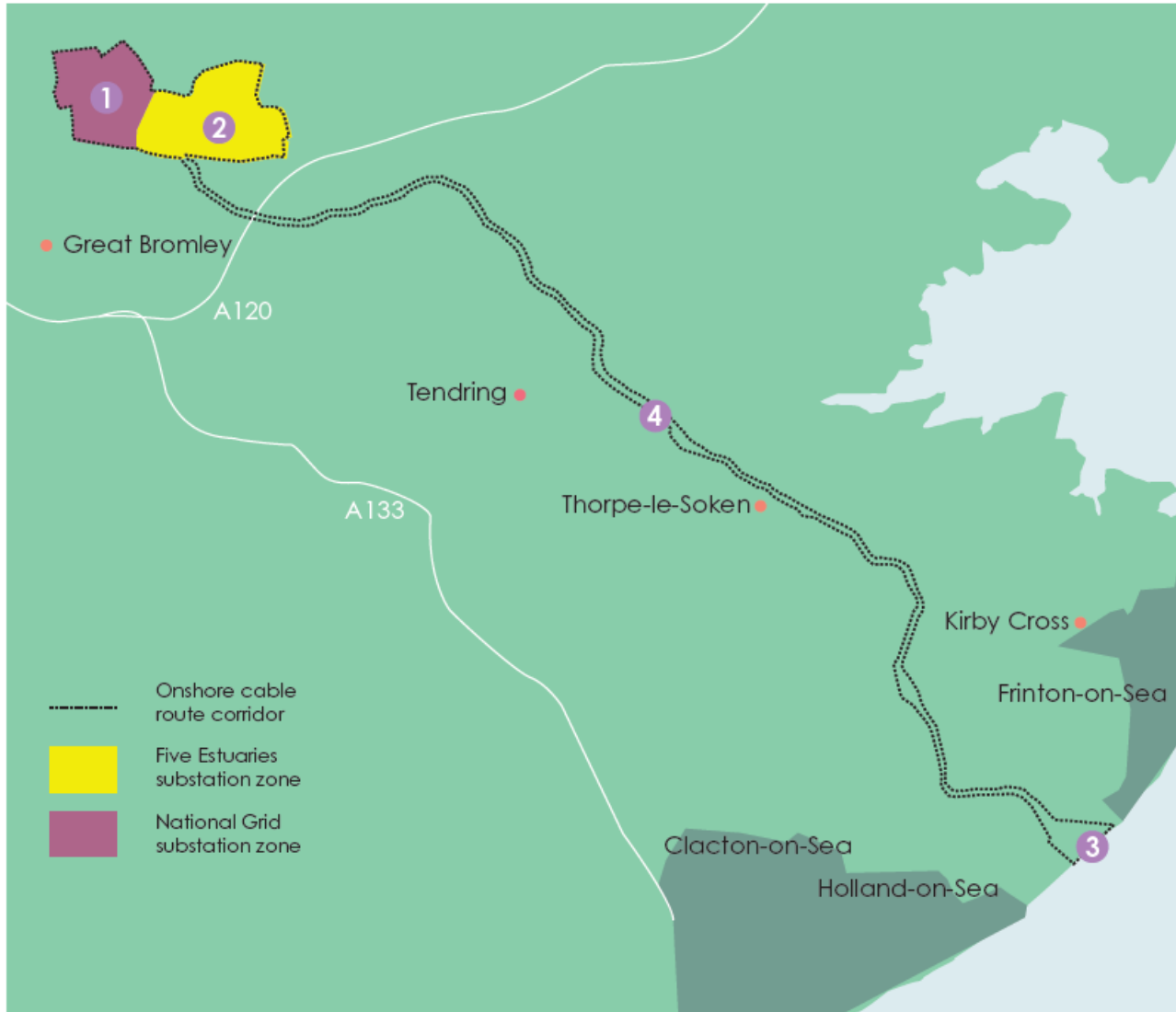
- Introductions
- Project overview
- Need for compensatory measures
- Compensatory site(s) proposals
  - Locations
  - Proposals
  - Construction access
- Potential impacts
- Consultation
- Next steps
- Questions

# Project overview – offshore



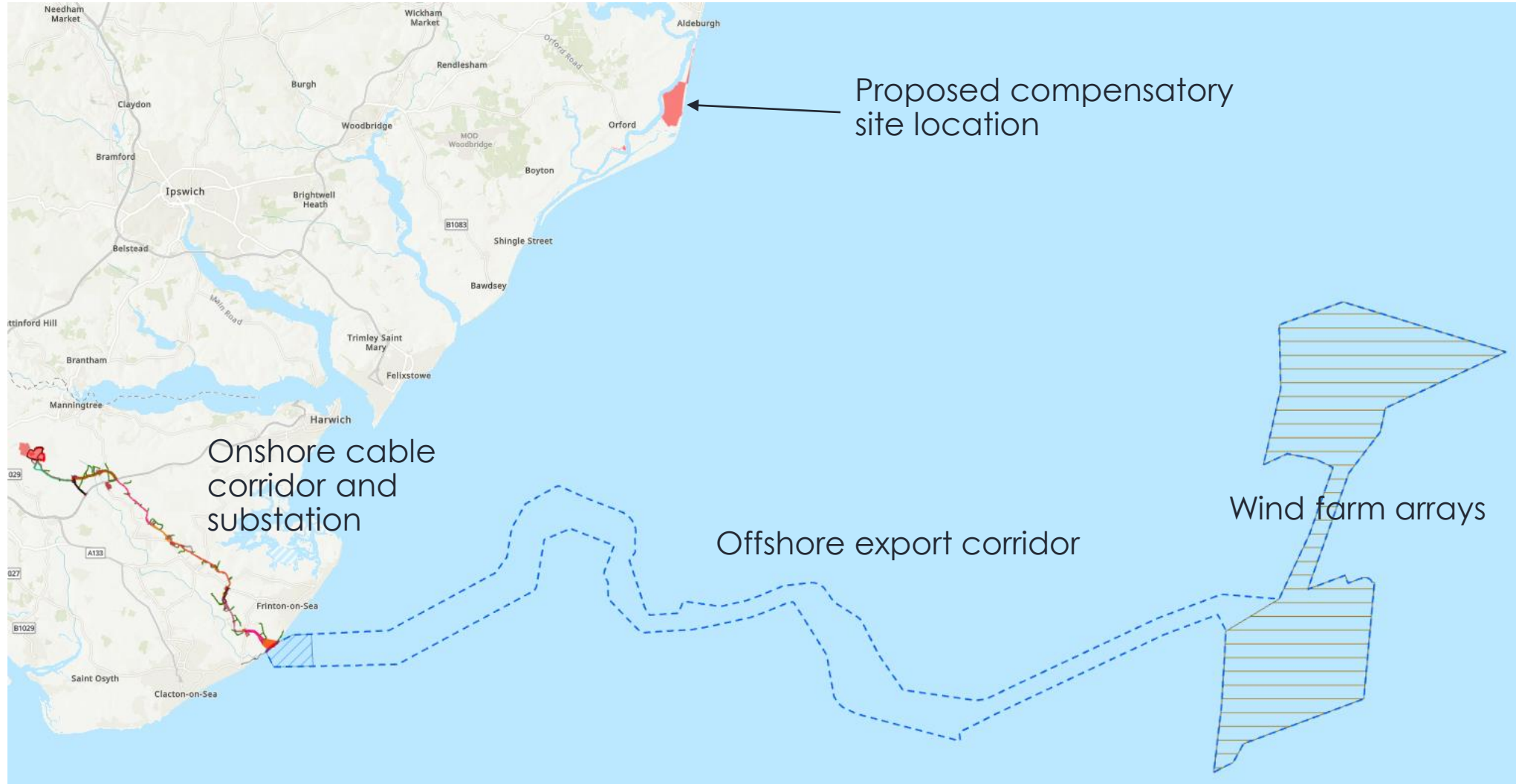
- Extension to the existing Gallopier Wind Farm.
- 128km<sup>2</sup> array area.
- Up to 79 wind turbine generators.
- Each turbine up to 420m at the tallest point of blade tip above sea level.
- 37km closest distance to the shore of Suffolk.
- Approximately 98km of offshore export cables.
- Landfall in Tendring, Essex.

# Project overview



1. National Grid's proposed East Anglia Connection Node substation (zone).
2. Five Estuaries onshore substation (zone)
3. Landfall for export cable.
4. Onshore underground export cable corridor.

# LBBG sites in relation to the Project

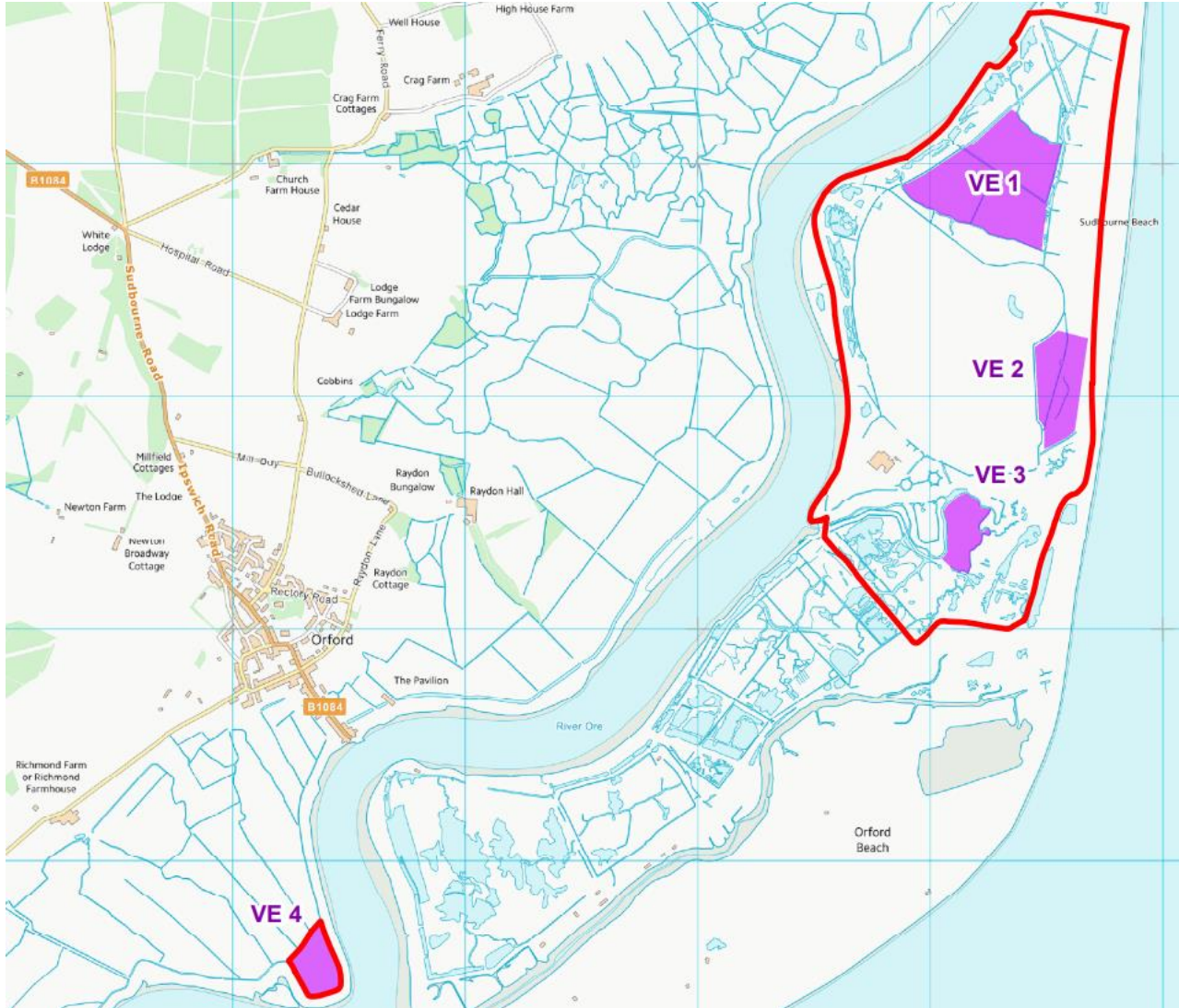


# Need for compensatory measures

- Potential impact on Lesser Black-Backed Gulls (LBBG), which are associated with the Alde Ore Estuary Special Protection Area (SPA).
- LBBGs are a qualifying feature of the SPA.
- Habitats Regulations state that where a protected site is impacted, and effects cannot be avoided, compensation is required.
- Therefore, compensatory measures are required for the predicted impact (around ten birds annually).



# Compensatory sites – locations



- Site search focused around Orford Ness and the Alde-Ore SPA.
- Sites selected for connectivity to existing colonies, suitable habitats and where disturbance / predation has occurred.
- At least one site is required, the use of two sites is an option.
- Also looking at other offsite areas to improve breeding success.

# Compensatory sites – proposals

- The works associated with the compensatory measures will primarily be predator exclusion fencing around the perimeter of the site.

## **Management of the site**

- Strimming of grass once or twice a year (outside of nesting season);
- Routine maintenance to check fencing once a year;
- Annual monitoring by an ornithologist.





# Construction and access



- Fence installation would take approximately three weeks with up to six personnel on site.
- Construction access to sites on Orford Ness would be by boat from Orford Quay, and then using existing tracks. Access to site VE4 would be via Gedgrave Road.
- Materials and machinery would be delivered to the site using standard low-loaders. Machinery is expected to be a small excavator and dump truck.
- Any work would be carried out outside of the nesting season.

# Potential impacts

- Due to the limited nature of the works and the remote location of the sites, our initial assessments indicate no significant environmental impacts.
- Fencing would be approximately 2m high. Fencing at any site would not be visible from Orford.
- We are aware of Orford Ness's history and will be carrying out surveys for unexploded ordnance (UXO) where needed.

# Consultation



- Deadline for responses is **11:59pm on Wednesday 31 January 2024**.
- More information available via the website:  
[www.fiveestuaries.co.uk/stage-3-consultation](http://www.fiveestuaries.co.uk/stage-3-consultation)
- Feedback can be provided either by post (**Freepost FIVE ESTUARIES**) or email [fiveestuaries@rwe.com](mailto:fiveestuaries@rwe.com).
- Feedback to the consultation will be used to inform site selection and detailed design.
- How responses have been considered will be included in our Consultation Report.

# Next steps

- Analyse feedback to the consultation.
- Complete detailed site surveys.
- Finalise site selection and design.
- Submission of an application for a Development Consent Order expected in Q1 2024.
- If consent is secured, works would be carried out as soon as possible (likely 2026).

## Q1 2024:

DCO submission

## 2024:

Examination process

## 2025:

Decision expected

## 2025-2026:

Procurement and detailed design

## 2027-2030:

Main construction