

Five Estuaries Offshore Wind Farm

Statement of Community Consultation



Contents

- Purpose of this document.....04
- About the Project.....05
- About Five Estuaries Offshore Wind Farm Limited.....06
- Project timeline.....07
- Components of a typical offshore wind farm..... 08
- Consenting process.....09
- Who we're consulting.....09
- What we're consulting on.....11
- How we're consulting.....12
- How to access the consultation documents.....14
- How to respond.....15
- How we are working with other projects.....17
- Offshore Transmission Network Review.....17
- Appendix 1: Onshore infrastructure and mailing boundary..... 19
- Appendix 2: Seascape, landscape and visual impact study area for the wind farm array.....20
- Appendix 3: Information points.....21
- Appendix 4: List of organisations to be contacted as part of the consultation.....22

Purpose of this document

This Statement of Community Consultation explains how we intend to consult with the local community on our proposals for the Five Estuaries Offshore Wind Farm Project (the 'Five Estuaries project' and 'the Project'). This consultation is scheduled to take place in early spring 2023 and will last for eight weeks.

Engagement with the local community is an important part of the development of the Project. This document only covers the statutory consultation with the public as required by Section 47 of the Planning Act 2008. Engagement with the community and other stakeholders has been underway since 2021.

This statutory consultation will be an opportunity to comment on the Project before plans are finalised. Your views are important to us.

The aim of the consultation is to help ensure that the Project's potential benefits and impacts are understood, and to collect feedback that will help shape our proposals. We have a duty to consider all relevant comments submitted in response to the consultation.

This Statement of Community Consultation includes:

- A short description of the Project and its background;
- An overview of the Development Consent Order (DCO) process;
- What we will be consulting on (including the documents that make up the statutory consultation);
- How we will be consulting with members of the public; and
- How to respond to the statutory consultation.

This document has been prepared in consultation with the following local authorities:

- Babergh District Council;
- East Suffolk Council;
- Essex County Council;
- Kent County Council;
- Suffolk County Council;
- Tendring District Council; and
- Thanet District Council.

About the Project

The Five Estuaries Offshore Wind Farm is the proposed extension to the operational Galloper Offshore Wind Farm, with up to 79 turbines across two areas. The closest point to shore of the Project above sea level is located 37km off the coast of Suffolk.



The Project includes the following:

- An offshore wind turbine generating station, comprising up to 79 wind turbine generators with associated foundations and a maximum tip height of 420m, and other offshore infrastructure, including up to two offshore substations.
- Offshore cables to bring the power to shore at a landfall between Frinton-on-Sea and Holland-on-Sea in Tendring, Essex.
- Underground electricity cables from landfall to connect the Project to National Grid’s proposed East Anglia Connection Node Substation.
- Construction of a new substation located in the vicinity of Little Bromley, required to transform the power from the wind farm up to the required voltage to connect to the national electricity transmission network.
- Associated works required to construct, operate, maintain and decommission the Project.

The wind farm would create enough energy each year to power hundreds of thousands of homes. Five Estuaries will support the UK Government's ambitions for up to 50 gigawatts (GW) of electricity generated from offshore wind by 2030 and help meet the objectives of the UK Energy Security Strategy.

Figure 2 shows the area where the offshore components of the Project (export cables, electrical offshore substations and turbines) will be located. Like the existing Galloper Offshore Wind Farm, the Project will have turbines in two separate areas of the southern North Sea. The new turbines would have a maximum tip height of between 360m and 420m compared to Galloper's 180.5m maximum tip height. Figure 3 shows the areas required for the onshore connection to the national electricity transmission network.

The detailed design of the Project is being developed through engineering studies, surveys and environmental investigation activities, and with input from pre-application consultation¹ with stakeholders and members of the public. The Project development process began in 2019, with the DCO application submission expected to be in late 2023. If granted, a DCO provides powers to construct both the onshore and offshore elements of the wind farm including the required Marine Licence. If granted, construction of the Project will follow, with the aim that the wind farm would become fully operational by 2030.

¹This includes our first stage of public consultation which ran from 30 June to 12 August 2022 and the upcoming consultation outlined in this document, as well as ongoing discussions with technical stakeholders.

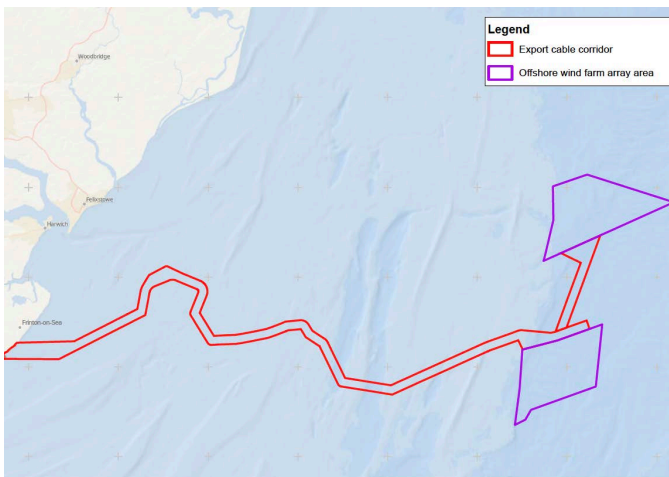


Figure 2: Wind farm array area and export cable route corridor



Figure 3: Overview of the Project's underground cable route corridor and search areas for the proposed onshore substation

The area needed for the onshore substation is significantly smaller than the search areas, and the width required to construct the underground cables is narrower than the corridor. You can find out more as part of the upcoming consultation.

About Five Estuaries Offshore Wind Farm Limited

The Project is being proposed by Five Estuaries Offshore Wind Farm Limited. The Five Estuaries Project partners are RWE (25%), a Macquarie-led consortium (25%), Siemens' financing arm, Siemens Financial Services (25%), ESB (12.5%) and Sumitomo Corporation (12.5%). RWE is leading the development of the Project on behalf of the project partners.

Project timeline

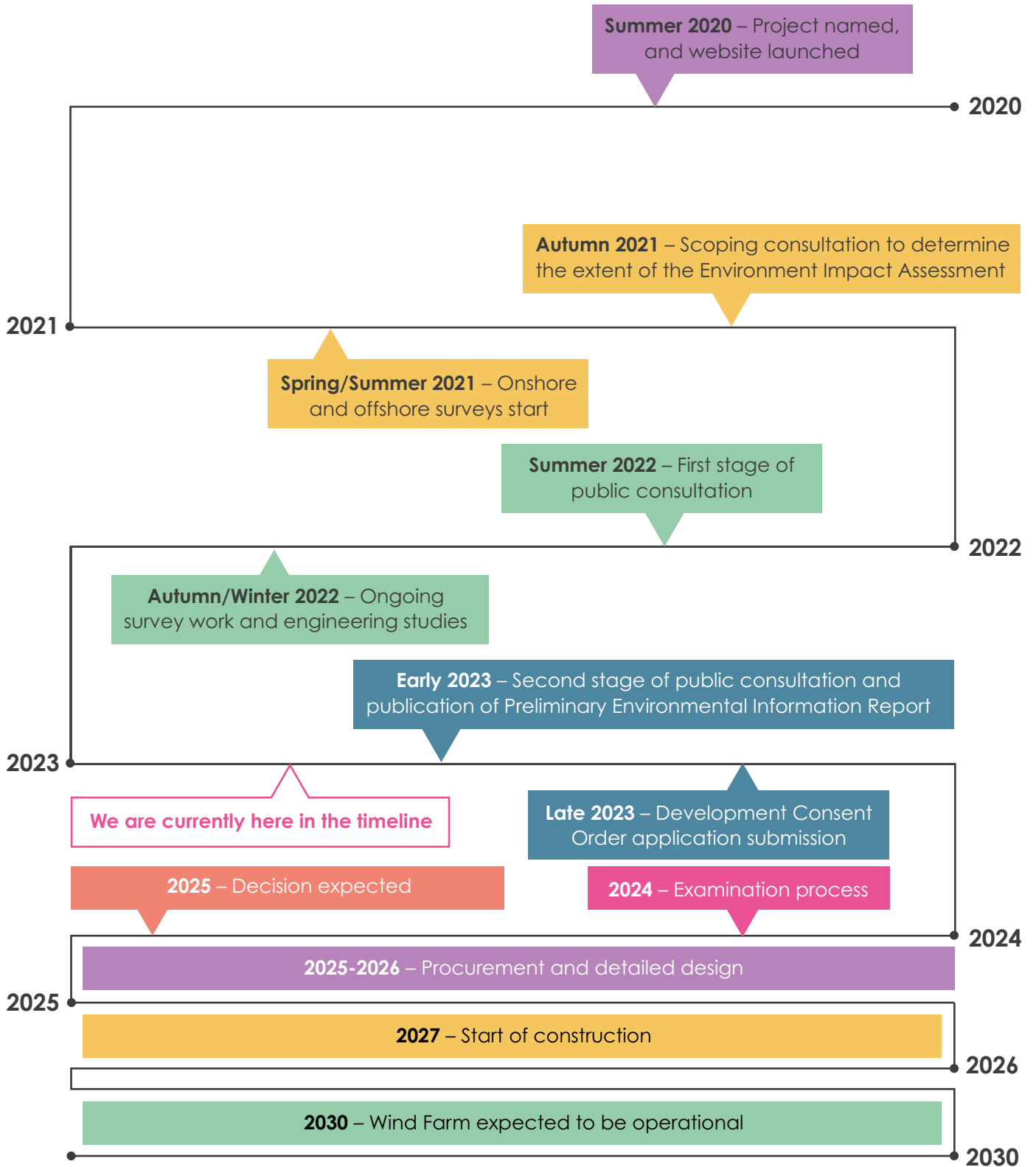


Figure 4: Indicative timeline for the Project

Components of a typical offshore wind farm

Figure 5 below shows the key components of a typical offshore wind farm. It displays the necessary components above and below the sea, seabed and ground level, from offshore to onshore. The diagram is illustrative and not to scale.

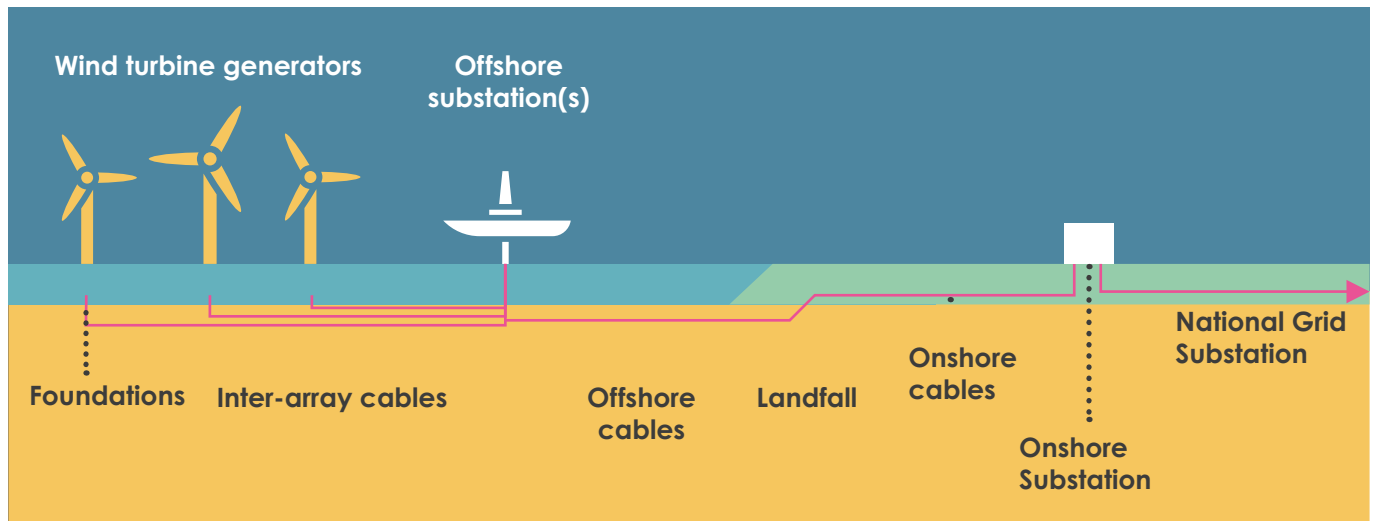


Figure 5: Key components of a typical offshore wind farm



Figure 6: An example of an onshore substation for an offshore wind farm



Figure 7: An offshore substation for the operational Galloper Wind Farm

Consenting process

The Project has a proposed generating capacity in excess of 100 megawatts and is therefore a Nationally Significant Infrastructure Project as defined in Section 15(3) of the Planning Act 2008. As such, we must apply for a Development Consent Order (DCO) to build and operate the Project. The DCO process was created to streamline the consenting of large infrastructure projects and to ensure transparency and public participation.

The application process will be managed by the Planning Inspectorate and examined by an independent Examining Authority. The Examining Authority will make a recommendation for consent or refusal following the examination, before a consent decision is made by the relevant Secretary of State.

The relevant local planning authorities will also play an important consultative role in the process, but do not have a decision-making role in determining this application.

Guidance on the DCO process can be found in Advice Note 8 on the Planning Inspectorate's website (<https://infrastructure.planninginspectorate.gov.uk>) under the 'Advice and Legislation' section.

The full link to this advice is:

<https://infrastructure.planninginspectorate.gov.uk/legislation-and-advice/advice-notes/advice-note-eight-overview-of-the-nationally-significant-infrastructure-planning-process-for-members-of-the-public-and-others/>

Who we're consulting

In accordance with Section 47 of the Planning Act 2008, we will consult people living in the vicinity of the proposed development area and who may be affected by the Project.

For the Project, this includes:

- Areas potentially affected by proposed onshore infrastructure including underground cabling and the proposed onshore substation; and
- Coastal areas in Essex, Suffolk and Kent with potential visual impacts from the proposed turbines and other offshore infrastructure.

In line with the proposals outlined in this document and the relevant sections of the Planning Act 2008, we will engage with:

- Local residents and businesses;
- Local elected representatives, including Members of Parliament, county councillors and district councillors and parish and town councils; and
- Resident, community, tourism and business organisations.

In addition to the groups outlined above, we will also be consulting with the groups below under Section 42 of the Planning Act 2008 over the same period as this consultation:

- Local Authorities (including both county and district councils);
- Owners, tenants and occupiers of land directly affected by the DCO application;
- Commercial stakeholders, including asset owners (such as the owners of cables and pipelines) and the commercial fisheries industry;
- The Marine Management Organisation; and
- Prescribed bodies as set out by the Planning Act 2008 (such as National Highways, Natural England and the Environment Agency).

Hard to reach groups

We will engage with those people who have less chance than others to get involved in the planning process and who can therefore be under-represented. These groups include young people, the elderly, the homeless, people with a disability, temporary residents and ethnic minorities, among others.

In order to help enable these groups to engage with the consultation we will:

- Provide a range of engagement opportunities both in-person and online;
- Provide summary information in clear, non-technical language;
- Hold in-person events at a range of locations chosen for their proximity to stakeholders and checked for accessibility;
- Make information available online in an accessible manner, in paper copy that can be posted on request, and at information points (see page 14 for information about requesting documents);
- Consider requests for large print / braille / audio content / other language versions;
- Operate an email and telephone contact point² to enable individuals to ask questions in their own time (although feedback cannot be collected over the phone); and
- Contact the organisations set out in Appendix 4 with information about the consultation and encourage them to share information with their members.

²The telephone contact number is a manned 24 hours a day, seven days a week service to record the details of enquiries for the Project team to respond to.

What we're consulting on

We will be consulting on proposals for the Five Estuaries Offshore Wind Farm Project as set out in the documents published as part of the statutory consultation.

The statutory consultation will not seek comments on the need for the Project, as that has already been identified by the UK Government, including through the National Policy Statements for Energy and the UK Government's targets for decarbonisation. The Project has already been informed by the results of the first public consultation, carried out from 30 June to 12 August 2022.

While comments are welcome on any aspect of the Project, we will specifically be seeking feedback on the Project's:

- Proposed onshore underground cable route;
- Search areas and indicative locations for the onshore substation;
- Proposed offshore cable route;
- Potential benefits of the Project to the local economy and supply chain;
- Mitigation proposals for potential impacts; and
- Environmental impact assessment information about the Project (as set out in our Preliminary Environmental Information Report).

Preliminary environmental information

As per the Infrastructure Planning (Environmental Impact Assessment) Regulations 2017, the Project is an Environmental Impact Assessment (EIA) development. Our Preliminary Environmental Information Report (PEIR) is the first main output of the EIA process and the largest document in this consultation. The PEIR sets out the current environmental baseline, and based on our initial assessments, the Project's potential benefits and impacts, and our proposals to mitigate those impacts. The PEIR is a key part of the consultation.

Consultation documents

The documents that make up the statutory consultation will be available from the start of the consultation. You can find out how to access the information later in this document. The statutory consultation will be made up of:

- The **Consultation Booklet**, which will summarise the Project proposals, the potential benefits and impacts, the parts of the Project that feedback can and cannot alter or influence and the specific issues we are seeking feedback about;
- A **Non-Technical Summary** of the Preliminary Environmental Information Report;
- The **Preliminary Environmental Information Report**;
- A short **Guide to the Preliminary Environmental Information Report**; and
- Supporting **maps and plans** relating to the Project.

How we're consulting

Consultation period

This consultation will take place in early spring 2023 and last for at least eight weeks.

All responses to the consultation must be received by 11:59pm on the last day of the consultation³. The consultation dates will be publicised as part of the promotion set out below.

³Postal responses must be in the post to us by the closing date of the consultation.

Promotion

Publicity of the statutory consultation will be more prominent in the Tendring Peninsula geographical area, particularly around the location of the proposed onshore substation and underground cable route corridor, proportionate to the potential impact in that area. We will promote the consultation in other areas, away from the onshore infrastructure to increase awareness of the consultation to communities that, under certain weather conditions, may be able to see the new offshore infrastructure (such as Suffolk and Kent coastal communities within our seascape, landscape and visual impact assessment study area in Appendix 2).

Newsletter

One newsletter promoting the statutory consultation will be sent via the Royal Mail to residential and business addresses within the distribution zone shown in Appendix 1. The boundary for this zone has been set at around 3km from the proposed substation search areas and around 1km from either side of the cable route corridor. The zone has been extended to include areas through which access to sites is required away from major roads. It has also been extended around the landfall location, and to ensure that sections of smaller settlements bisected by the boundary are not excluded.

The newsletter will contain information about the Project, the consultation process and dates, public information event venues, dates and times, where more information is available and how to provide feedback.

Newspaper advertisements and posters

We will seek to publish advertisements in the newspapers listed below. Advertisements will appear before public events start in order to help promote both the consultation and the events. Additional advertisements will be published approximately a week before the close of consultation with a reminder of the deadline for consultation responses.

Newspapers that we will seek to publish consultation adverts in:

- Harwich and Manningtree Standard
- Clacton and Frinton Gazette
- Essex County Standard
- East Anglian Daily Times
- Southwold Gazette
- Lowestoft Journal
- Aldeburgh Gazette
- Felixstowe Flyer
- Thanet Extra
- Isle of Thanet News (online only as the print edition is on hold)

We will also seek to place advertisements in local parish publications, where timescales permit.

A series of Statutory Notices will be placed in the appropriate publications as prescribed in line with Section 48 of the Planning Act.

Posters highlighting consultation information will be placed on community noticeboards near the location of planned events where available. We will send parish councils posters to use, should they wish to. Posters will also be sent to other community venues/premises such as GP Surgeries to be placed on community noticeboards if possible.

Email alerts

An email with consultation information will be sent out on the first day of the consultation to those people who have subscribed to our mailing list. From the outset of development, the Project has enabled interested individuals and businesses to sign-up to a mailing list on the Project website to receive information electronically. A second email update will also be sent out approximately one week before the close of the consultation to remind people of the deadline for consultation responses.

Elected representatives

We will email regional, district and parish council elected representatives directly at the start of the consultation. In addition to information about the Project and the consultation, they will be provided with information about consultation events happening in or close to their constituency.

We will email Members of Parliament, county councillors, district councillors and parish councils who represent the areas informed by our seascape, landscape and visual impact assessment study area as shown in Appendix 2. Parish councils will be provided with printed copies of the newsletter.

Other groups

In addition to statutory and prescribed organisations, we will also email other local business, interest and community groups to inform them of the consultation and how to take part. Organisations that also represent 'hard to reach' groups will also be contacted. This list is included in Appendix 4 and is not intended to be an exhaustive list of local organisations, but an additional method of spreading awareness.

Social media

Targeted social media adverts will be placed ahead of public information events to help increase awareness of the events and consultation.

How to access the consultation documents

Website

The complete set of statutory consultation documents will be made available from the start of consultation in accessible, downloadable PDF documents on the Project website www.fiveestuaries.co.uk.

Information points

Copies of selected consultation documents will be available for reference at the locations listed in Appendix 3. Each location will receive the Consultation Booklet, the Non-Technical Summary of the PEIR and copies of maps. These documents will be delivered to the locations at the start of the consultation and each location checked once throughout the consultation to ensure that all of the documents are still available. Due to opening hours, documents may not be available at all locations in the first few days of the consultation, however we will endeavour to ensure full coverage from the launch.

In addition, information on how to access the PEIR online, contact the Project team and respond to the consultation will be provided, to be presented along with the documents. Each library will also be provided with contact details in case documents are removed, lost or damaged.

Printed documents on request

Copies of this document and the consultation documents can be requested from the Project using the contact details at the end of this document once the consultation has started.

One paper copy of the Consultation Booklet and Non-Technical Summary will be sent free of charge to any UK address on request during the consultation. Due to the size of the PEIR and supporting maps and plans, a charge (maximum of £1,000) may be incurred for a paper copy. Requests will be considered on a case-by-case basis.

Public information events

In order to provide an opportunity for all interested individuals to view the information in person and to ask questions to the Project team, a series of public events will be held during the consultation period. At each in-person event, all consultation documents will be available to view, and copies of the Consultation Booklet and feedback forms will be available for attendees to take away. The dates, times and locations of these events will be publicised as part of the promotion set out above.

- Five public events will be held in Tendring District, near to the proposed onshore infrastructure and works;
- Four public events will be held along the Suffolk coast. These events will be smaller and focus on the potential visual impact from Suffolk; and
- One public event will be held in Margate. This event will be smaller and focus on the potential visual impact from Kent.

Online events

We will host two live webinars in which we will outline the Project proposals and the consultation process. One webinar will focus on onshore aspects of the proposals, while the other will focus on offshore elements. There will be an opportunity for attendees to ask questions during the sessions. Online events will last for one and a half hours and attendees will have to register to attend via the Project website. A recorded version of each of the webinars will be published on the Project website.

Changes to dates and consultation

If, due to unforeseen circumstances, last-minute changes to the dates of the consultation or activities set out in published promotional material are required, we will publish those changes on the Project website (www.fiveestuaries.co.uk), send an update email to those individuals who have subscribed to our electronic updates, and contact groups identified in Appendix 4 and the relevant local authorities and elected representatives.

Five Estuaries will monitor the situation in relation to the ongoing COVID-19 pandemic regarding in-person events. Should the ability to hold in-person events be affected by changing circumstances, we will explore the provision of additional engagement opportunities.

It is not expected that further statutory community consultation will be carried out after that described in this Statement. If further statutory consultation is proposed then we will discuss the approach to be followed with the relevant local authorities, and publicise the proposed consultation on the Project website and by other appropriate means.

How to respond

The deadline for submitting responses to the Project statutory consultation will be 11:59pm on the last day of the consultation.

You will be able to respond to the consultation through the following channels:

- Feedback forms or written feedback can be sent to us at the following Freepost address:
Freepost FIVE ESTUARIES
- Feedback forms or written feedback can also be left with us at any of our public events.
- You will be able to complete our feedback form online via:
www.fiveestuaries.co.uk.
- You can email your feedback to us at fiveestuaries@rwe.com. Please include 'FEEDBACK' in the subject line.

Please note that verbal feedback given to the Project team at events or at meetings cannot be taken as a formal response to the consultation.

Please note that no stamp or further address information is required.

Please ensure postal responses are sent by the deadline.

What will we do with your feedback?

All feedback received in response to the statutory consultation will be considered by the Project team and considered during the application process for the DCO. Setting out how we have considered all the issues received from feedback to the statutory consultation is a requirement of the Planning Act 2008 and will be included in the Consultation Report that accompanies our application.

We will not respond directly to your feedback, however, our consideration of the relevant issues raised from feedback will be set out in our Consultation Report.

Sharing feedback with other projects

The proposed North Falls Offshore Wind Farm project is an extension to the existing Greater Gabbard Offshore Wind Farm. Both the North Falls and Five Estuaries projects have accepted offers from National Grid to connect to the national electricity grid at the same location, and as such both are likely to affect many of the same stakeholders. Although these are two separate projects, with different developers, shareholders, programmes, potential benefits and impacts, they are coordinating to minimise potential impacts and identify ways of bringing both projects forward in an efficient manner. However, for legal and consenting reasons it is necessary for each to carry out their own consultation.

As part of coordination between the projects, a summary of the issues raised from feedback from members of the public to this Five Estuaries consultation will be shared with the North Falls project for information. Responses to this Five Estuaries consultation will not count as responses to future consultations carried out by North Falls. As such, it is important that you respond to both projects' consultations if you wish to have a response formally considered.

You can find out more about the North Falls Offshore Wind Farm project at www.northfallsoffshore.com

Will there be any other opportunity to provide feedback?

The statutory consultation is likely to be the last opportunity to provide formal feedback directly to the Project before an application for a DCO is submitted. However, once a DCO application is submitted, there will be additional opportunities to provide written comments on the documents, and to verbally raise key points during the resultant public hearings that have previously been submitted in writing. These opportunities will be publicised at the appropriate time by the Planning Inspectorate.

How we are working with other projects

We are committed to exploring opportunities to coordinate with other infrastructure projects being developed in the area. We are engaging with other projects where there may be mutual areas of interest around site selection and route refinement work.

East Anglia GREEN project is a proposal by National Grid Electricity Transmission (National Grid) to reinforce the high voltage power network in East Anglia between the existing substations at Norwich Main in Norfolk, Bramford in Suffolk and Tilbury in Essex. As part of this project, National Grid are proposing the East Anglia Connection Node Substation on land near Lawford and Ardleigh, which is the proposed point for the Five Estuaries Offshore Wind Farm to connect to the national electricity transmission network.

You can find out more about East Anglia GREEN at: www.nationalgrid.com/east-anglia-green

The **North Falls Offshore Wind Farm** is the proposed extension to the operational Greater Gabbard Offshore Wind Farm, which has also been provided with a grid connection at the East Anglia Connection Node Substation. Due to the location of the two projects, we continue to work closely with North Falls on key elements such as cable corridor selection (to optimise both onshore routes), environmental surveys and by sharing consultation feedback.

Coordination and cooperation will continue throughout the development of both projects and may enable elements of joint delivery should the technical and commercial conditions make it practical. The primary goal of this coordination is to reduce the potential impact of building the onshore connection to the national electricity transmission network for the two projects.

You can find out more about the North Falls Offshore Wind Farm project at: www.northfallsoffshore.com

The potential cumulative impacts of these projects is part of the Environmental Impact Assessment process, and will be reported on in the documents published as part of the upcoming consultation.

Offshore Transmission Network Review

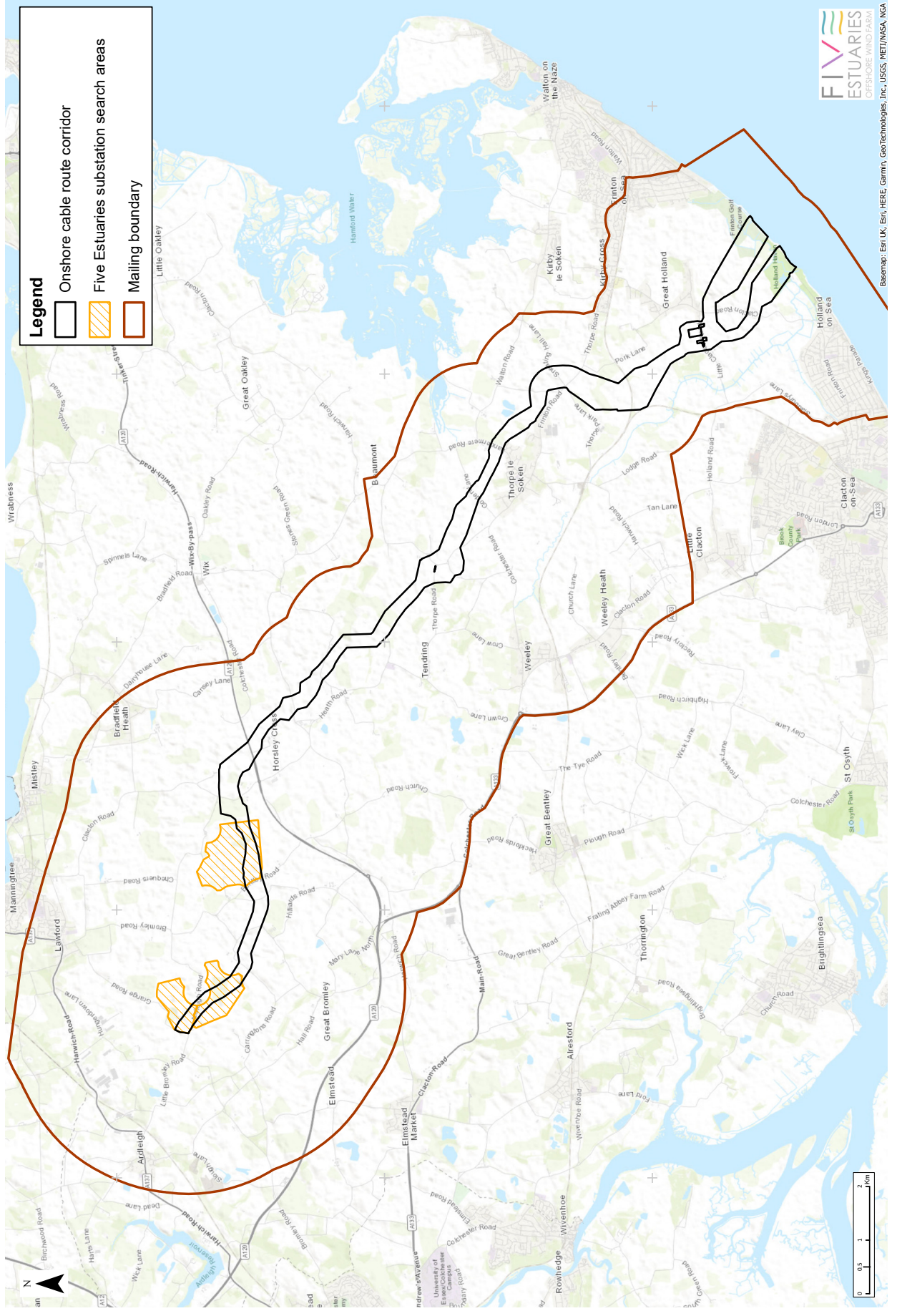
Five Estuaries is currently engaged in the government-led Offshore Transmission Network Review, which is looking into ways that the offshore network is designed and delivered, consistent with the ambition to deliver net zero emissions by 2050. Both the Government's recent Energy Security Strategy and Net Zero goals show the importance of bringing 50GW of new offshore renewable generation online by 2030.

Following the Project's involvement with the Offshore Transmission Network Review and the feedback from our last stage of consultation, we have now identified the opportunity to coordinate more closely with the North Falls Offshore Wind Farm project. The primary goal of this coordination is to reduce the potential impact of building the onshore connection to the national electricity transmission network for the two projects.

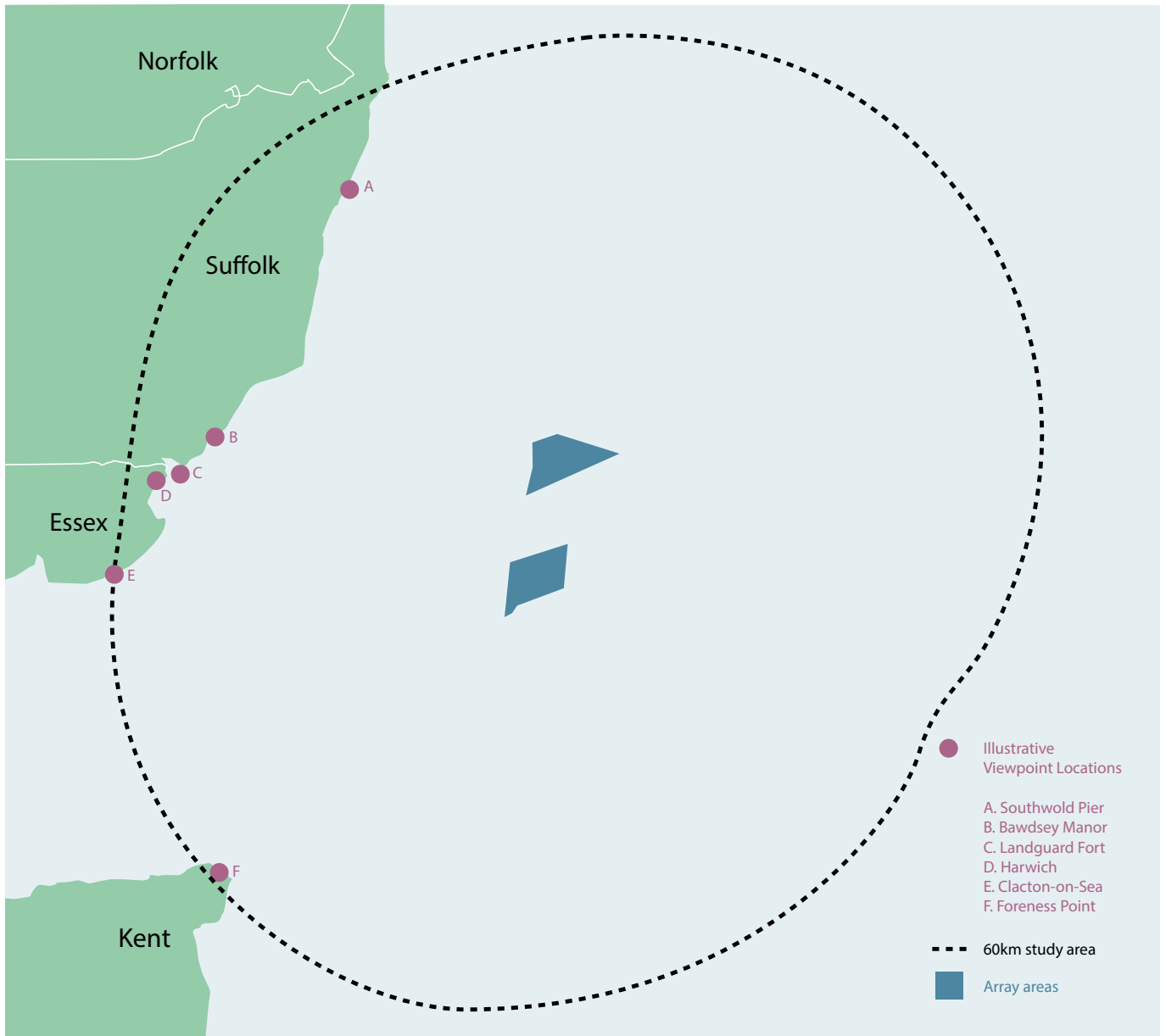
Five Estuaries is also considering submitting an application for a Development Consent Order that would allow for flexibility to accommodate a coordinated offshore connection at a later date, provided there is greater certainty on the commercial, regulatory and technical environment. The viability of any coordinated connection is dependent on the progress made by the Offshore Transmission Network Review process and associated regulatory and commercial policy changes and the individual offshore connector projects involved.

It is important to recognise the risk of delaying projects that the UK Government is counting on to deliver their 2030 ambitions for offshore wind deployment. Alongside considering opportunities for cooperation, we will continue to develop coordinated plans on the basis of existing regulations to provide an onshore connection, ensuring no delay to our planned grid connection date and therefore continuing to support the UK Government's 2030 targets.

Appendix 1: Onshore infrastructure and mailing boundary



Appendix 2: Seascape, landscape and visual impact study area for the wind farm array



Visualisations will be produced as part of the PEIR that will show what views towards the proposed wind farm could look like from a variety of viewpoints.

Appendix 3: Information points

Copies of the consultation documents will be made available at the following locations at the start of the consultation. Each location will be checked once during the consultation process. Should you find that any documents have been removed, lost or damaged, please contact us so that a replacement can be provided.

Opening hours are subject to change, please check before travelling.

Location	Address	Mon	Tues	Wed	Thurs	Fri	Sat	Sun
Brightlingsea Library	New Street, CO7 0BZ	Closed	2pm to 5:30pm	9am to 1pm	Closed	2pm to 7pm	9am to 5pm	Closed
Clacton Library	Station Road, CO15 1SF	9am to 5:30pm	9am to 5:30pm	9am to 7pm	9am to 5:30pm	9am to 5:30pm	9am to 5pm	Closed
Colchester Library	Trinity Square, CO1 1JB	9am to 5:30pm	9am to 5:30pm	9am to 7pm	9am to 5:30pm	9am to 5:30pm	9am to 5pm	1pm to 4pm
Frinton Library	59 Old Road, CO13 9DA	Closed	9am to 5:30pm	Closed	9am to 7pm	9am to 5:30pm	9am to 5pm	Closed
Greenstead Library	Hawthorn Avenue, CO4 3QE	9am to 5:30pm	9am to 5:30pm	Closed	9am to 5:30pm	Closed	9am to 5pm	Closed
Harwich Library	Upper Kingsway, CO12 3JT	9am to 5:30pm	9am to 7pm	Closed	9am to 5:30pm	9am to 5:30pm	9am to 5pm	Closed
Jaywick Library	4-34 Golf Green Road, CO15 2RH	10am to 12 noon	10am to 12 noon	10am to 12pm, 2pm to 4pm	Closed	10am to 12 noon	10am to 12 noon	Closed
Manningtree Library	High Street, CO11 1AD	Closed	9am to 5:30pm	9am to 1pm	1pm to 7pm	9am to 1pm	9am to 5pm	Closed
Prettygate Library	Prettygate Road, CO3 4EQ	Closed	9am to 7pm	9am to 5:30pm	Closed	9am to 5:30pm	9am to 5pm	Closed
Tendring Town Hall	Station Road, Clacton-on-Sea, CO15 1SE	9am to 3pm	9am to 3pm	9am to 3pm	9am to 3pm	9am to 3pm	Closed	Closed
West Clacton Library	Jaywick Lane, CO16 8BE	9am to 4:30pm	9am to 4:30pm	9am to 4:30pm	9am to 4:30pm	9am to 4:30pm	Closed	Closed
Wivenhoe Library	104/6 High Street, CO7 9AB	Closed	2pm to 7pm	Closed	9am to 5:30pm	Closed	9am to 5pm	Closed
Aldeburgh Library	Victoria Road, IP15 5EG	9am to 1pm	9am to 1pm	9am to 6pm	9am to 1pm	9am to 1pm	10am to 3pm	10am to 1pm
Endeavour House	8 Russell Road, IP1 2BX	8am to 5pm	8am to 5pm	8am to 5pm	8am to 5pm	8am to 5pm	Closed	Closed
Felixstowe Library	Crescent Road, IP11 7BY	10am to 4pm	9am to 5:30pm	9am to 7:30pm	9am to 5:30pm	9am to 5:30pm	9am to 5pm	10am to 4pm
Leiston Library	Old Post Office Square, IP16 4ER	Closed	9:30am to 7:30pm	Closed	9.30am to 5.30pm	9.30am to 1pm, 2pm to 5pm	9.30am to 1pm, 2pm to 5pm	10am to 3pm
Lowestoft Library	Clapham Road South, NR32 1DR	9am to 6pm	8:30am to 6pm	8:30am to 6pm	8:30am to 6pm	8:30am to 6pm	9am to 5pm	10am to 4pm
Saxmundham Library	Street Farm Road, IP17 1AL	Closed	9:30am to 5:30pm	9.30am to 5.30pm	Closed	9:30am to 5:30pm	10am to 1pm	10am to 3pm
Southwold Library	Field Stile Road, IP18 6LD	Closed	10am to 1pm, 2pm to 6pm	10am to 1pm, 2pm to 6pm	10am to 1pm, 2pm to 6pm	10am to 1pm, 2pm to 6pm	9.30am to 1pm, 2pm to 5pm	11am to 4pm
Margate Library	Thanet Gateway Plus, Cecil Street, CT9 1RE	10am to 5:30pm	10am to 5pm	10am to 5pm	10am to 5:30pm	10am to 5:30pm	10am to 3:30pm	Closed

Appendix 4: List of organisations to be contacted as part of the consultation

Business groups

- Backing Essex Business
- BEST Growth Hub
- Brightlingsea Business Network
- Clacton Town Partnership
- Clacton Women in Business
- Colbea
- East Suffolk Means Business
- Essex Chamber of Commerce
- Federation of Small Businesses
- Felixstowe Chamber of Trade and Commerce
- Frinton Businesses
- Kent Ambassadors
- Kent Invicta Chamber of Commerce
- Invest ESSEX
- Manningtree Business Network
- Manningtree District Business Chamber
- National Farmers Union – East Anglia
- Sealand
- Suffolk Business Women
- Suffolk Chamber of Commerce
- Tendring Breakfast Club
- Tendring Business Leaders Association
- Tendring 4 Growth
- Thanet & East Kent Chamber
- The Kent & Medway Economic Partnership

Tourism / leisure groups

- Ardleigh Fly Fishing Club
- Ardleigh Sailing Club
- British Hose Society – East
- Clacton Golf Club
- Clacton Pier
- Clacton Sailing Club
- Clacton Tourist Information Centre
- Essex Bridleways Association
- Frinton Cricket Club
- Frinton Golf Club
- Frinton Summer Theatre
- Holland-on-Sea Bowls Club
- Princes Theatre

- RNLI Clacton
- Suffolk Coast Ltd Destination Management Organisation
- Suffolk Ramblers
- Tendring Cricket Club
- Tendring Hundred Farmers Club
- Tendring Volleyball Club
- Visit Thanet
- Westcliff Theatre

Community / residents groups

- Clacton and District Local History
- CVS Tendring
- Essex Suffolk Norfolk Pylons
- Frinton Residents Association
- Holland Residents Association
- Manningtree Museum
- Practical Actions for Climate and Environment
- Suffolk Wildlife Trust
- Tendring District Local History Recorders
- Tendring Essex Wildlife Trust
- Tendring Ramblers
- Thanet Over Fifties Forum
- The Rotary Club of Clacton-on-Sea
- The Rotary Club of Felixstowe
- The Rotary Club of Margate
- Walton Information Centre
- Weeley Residents Association

Hard to reach groups

- Age UK
- Autism Anglia
- Candles
- Crossroads Tendring
- Essex Countywide Traveller Unit
- Essex Sight
- Families in Focus
- Frinton and Walton Heritage Trust
- Healthwatch Kent
- Hi Kent
- Ipswich & Suffolk Council for Racial Equality
- Kent Association for the Blind
- MS Society

- Norfolk & Suffolk Gypsy, Roma and Traveller Service
- Signpost
- Suffolk Sight
- Summit
- Tendring Elder Care
- Thorrington Friends
- Young Essex Assembly
- Young Kent Assembly
- Young Suffolk Assembly

You can contact the Project team at any time using the details below:

Phone: 0333 880 5306

Website: www.fiveestuaries.co.uk **Email:** fiveestuaries@rwe.com

2023

R01